



WORLD'S BEST  
ALLOY BULLBARS

East Coast Bullbars (ECB Pty Ltd)

Tel: 07 3897 5700

Fax: 07 3283 1168

ecb@ecb.com.au www.ecb.com.au

29 Snook St  
Clontarf QLD 4019  
Australia

Po Box 122  
Margate QLD 4019  
Australia

REPLACES: 08.02.10  
REVISED: 29.06.10

BN63SY

## FITTING INSTRUCTIONS

### NISSAN PATHFINDER R51 07/05on ST-L & Ti MODELS & NAVARA D40 12/05- BIG TUBE™ PROTECTION BAR with FOG LAMPS VEHICLE FRONTAL PROTECTION SYSTEM (VFPS) FOR AIR BAG & ADR COMPLIANT VEHICLES

Check installation hardware before commencing.

Special tools: Extra cab only: T20 Torx bit and associated driver.

1. Lift bonnet.
2. *Slide fingers behind end of grille opening in bumper skin. If there is a top panel and nut on top of chassis, skip to step 11. Discard two steel plates with captive nuts welded on supplied in fitting kit. See figure 1*
3. Remove grille, six push pull plastic clips, four twist clips on sides and release four clips from inside lower edge. Pull grille forward to remove.
4. Remove lower plastic cover from bumper cover. Six 10mm head bolts. **See figure 2.**
5. Remove mudflaps and inner guards. Four PK screws (per side) for mudflaps, one PK screw under rear of mudflap, four PK screws around edge of guard, four push pull plastic clips on inner guard and two 10mm head bolts (per side) under front. Pull inner guard up and inward to remove. (All PK screws are T20 Torx on Extra cab) **Caution:** Stress to outer guard skin will result in damage to guard.
6. Remove bumper. In grille opening remove three plastic PK screw clips, three plastic PK screw clips from above number plate, four 10mm head bolts under bumper centre, two 10mm head bolts under bumper wings to guards (per side), pull bumper cover to sides from clips under guards and forward to release from clip under headlights.
7. Remove two 17mm head bolts from inside of bumper support (per side).
8. **EXTRA CAB AND SINGLE CAB ONLY:** Fit two ½ x 1 ½ bolts and washers on wire (supplied) into lower holes on chassis rail. Bend wire so it pushes bolt into hole. Fold wire into chassis rail.
9. Refit bumper support using two M12 x 40 bolts, flat washers and spring washers (supplied) with ECB steel mounting plate behind bumper support. **Note:** Welded nut to rear inside of vehicle.
10. Refit bumper as per reverse of steps 3 to 7.
11. Remove towing hook from passenger side chassis. Two 17mm head bolts. **See figure 3.**
12. **Navara D40 Models only:** Using a die grinder or similar, trim out bumper section following the bumper contour as per **figures 4 and 5**, so 17mm head bolts and steel support can be fitted later.
13. **Pathfinder R51 Models only:** Remove plastic trims from bumper cover. **See figure 8.**
14. **Pathfinder R51 Models only:** Using die grinder or similar trim plastic as shown in **figure 9**, so 17mm head bolts can be removed and steel support fitted later.



**WORLD'S BEST  
ALLOY BULLBARS**

**East Coast Bullbars (ECB Pty Ltd)**

Tel: 07 3897 5700

Fax: 07 3283 1168

ecb@ecb.com.au www.ecb.com.au

29 Snook St  
Clontarf QLD 4019  
Australia

Po Box 122  
Margate QLD 4019  
Australia

15. Grind lip off lower chassis, so steel mounting brackets will sit flat. **See figures 6 and 7. NOTE:** Treat all exposed metal with a rust inhibitor.
16. Place masking/protection tape on bumper.
17. Position steel mounting brackets (supplied) on chassis rails. Insert M12 x 40 rear bolts (supplied) only by two turns into captive nuts in chassis. Let steel mounting brackets hang down. **See figure 10.** Use M12 x 40 bolts, nuts and washers (supplied).
18. Trim lower plastic cover to fit around steel mounting brackets. **See figures 11 and 12.**
19. Slide lower plastic cover over steel mounting brackets. **See figure 13.** Insert front M12 x 40 bolts, nuts and washers (supplied) into captive nuts in chassis. Align steel mounting brackets with bumper. **TIGHTEN FIRM ONLY. See figure 14.**
20. Refit lower plastic cover to bumper cover. **See figures 15 and 16.**
21. Fit steel mounting supports (supplied) to where 17mm head bolts were removed. Use original bolts. **FINGER TIGHTEN ONLY.** Fit to inside of steel mounting brackets. Use ½ x 1 ½ bolts, nuts and washers (supplied). **FINGER TIGHTEN ONLY. See figures 17 and 18.**
22. Ensure steel mounting brackets are central with bumper and set at correct measurement for ECB alloy protection bar to mount outside of steel mounting brackets. **TIGHTEN ALL STEEL MOUNTING BRACKET and STEEL MOUNT SUPPORT BOLTS/NUTS.**
23. Splice ECB indicator / park light wiring into original wiring loome at rear of original headlight / indicator assembly. Use cable locks (supplied). **NOTE:** Feed ECB wiring in through bumper cover beside steel mounting brackets. **See figure 19.**
24. Connect ECB fog light wiring into original fog light wiring. Use cable locks (supplied). **NOTE:** Feed ECB wiring in through bumper cover besides steel mounting brackets. On models with no original fog lights fitted, additional wiring to switch and low beam may be required.
25. Fit ECB LED indicator / park lights (supplied) into protection bar as per instructions supplied with the LED indicator kit. **NOTE: Ensure park light is to outside. See figure 20.**
26. Attach ECB fog lights to protection bar. Place M6 x 20 bolts, spring washers (supplied) through light mount from inside and attach nut to top. Slide assembly into light mount in Protection bar and centralize light to hole. **See figure 21. TIGHTEN ALL BOLTS FIRM ONLY.** Do not fit fog light trims at this stage.
27. Attach 6mm clip lock trim (supplied) to rear of protection bar. **NOTE:** Trim off lower edge on an angle so trim will sit flush with end of protection bar. **See figures 22, 23, 24 & 25.**
28. Fit 6mm clip lock trim to air vent cut outs in front of protection bar. Start at top centre and feed into corners. Trim off end slightly longer than needed and force in at top to create a neat finish. **See figure 26. NOTE:** Ensure ends are cut square.
29. Fit ECB protection bar to outside of steel mounting brackets. Use ½ x 1 ½ bolts, nuts and washers (supplied). Align with vehicle. **See figures 27, 28** for front and side views. **TIGHTEN ALL BOLTS/NUTS. NOTE:** Access through air vent cut outs.



East Coast Bullbars (ECB Pty Ltd)

Tel: 07 3897 5700

Fax: 07 3283 1168

ecb@ecb.com.au www.ecb.com.au

WORLD'S BEST  
ALLOY BULLBARS

29 Snook St  
Clontarf QLD 4019  
Australia

Po Box 122  
Margate QLD 4019  
Australia

- 30. Connect fog lights. **CHECK OPERATION.** Aim with low beam, **TIGHTEN IN POSITION.** Fit ECB fog light trims (supplied) to protection bar, wider part of trim to inside.
- 31. Connect ECB indicator / park lights and **CHECK OPERATION.**
- 32. **NOTE:** Towing points are incorporated into steel mounting brackets. These are designed to be used together via a link for straight line towing and light snatching using an elastic type snatch rope. Always take care when towing or snatching and observe safety requirements of equipment being used.

**ENSURE THESE INSTRUCTIONS ARE LEFT WITH VEHICLE OWNER AND/OR OPERATOR**

**Note:** When fitting/refitting the licence plate to the vehicle, ensure there is no obstruction to licence plate vision in accordance with local authorities. If required relocate licence plate to an alternate location.

**NOTE POSITION OF NUMBER PLATE ON FIGURE 27**

**Further VFPS Notes:**

- a) Do not attach VFPS to the vehicle using anchorages not intended for this purpose (e.g. engine mounting bolts).
- b) Do not use this product for any vehicle make or model, other than those specified by the VFPS manufacturer.
- c) Do not remove the plaque or label from the VFPS.
- d) Do not modify the structure of the VFPS in any way.
- e) No accessory or fitment should project forward of the VFPS forward profile.
- f) **ENSURE THESE INSTRUCTIONS ARE LEFT WITH VEHICLE OWNER AND/OR OPERATOR.**

**IMPORTANT INFORMATION**

**Periodically check bolts and nuts for correct tightness, especially if travelling on rough roads.**

**FITTING KIT**

2 – Steel mounting brackets.	2 – M6 flat washers.
2 – Steel supports.	2 – M6 spring washers.
2 – Steel chassis brackets (use on Extra/Single cab only)	2 – M6 nuts
6 – M12 x 40 x 1.25 bolts.	1 – 2200mm length 6mm clip lock.
6 – ½ x 1 ½ bolts	2 – 680mm lengths 6mm clip lock.
2 – ½ x 1 ½ bolts and washers on 300 mm wire	1 – ECB LED Indicator / Park light kit
8 – ½ nuts	2 – ECB fog lights.
18 – ½ flat washers.	2 – ECB fog light trims.
14 – ½ spring washers.	10 – Cable locks.
2 – M6 x 20 bolts.	



East Coast Bullbars (ECB Pty Ltd)

Tel: 07 3897 5700

Fax: 07 3283 1168

ecb@ecb.com.au www.ecb.com.au

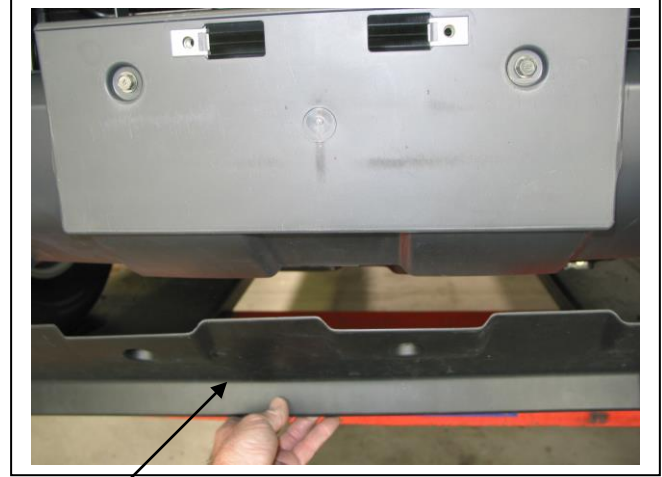
WORLD'S BEST  
ALLOY BULLBARS

29 Snook St  
Clontarf QLD 4019  
Australia

Po Box 122  
Margate QLD 4019  
Australia

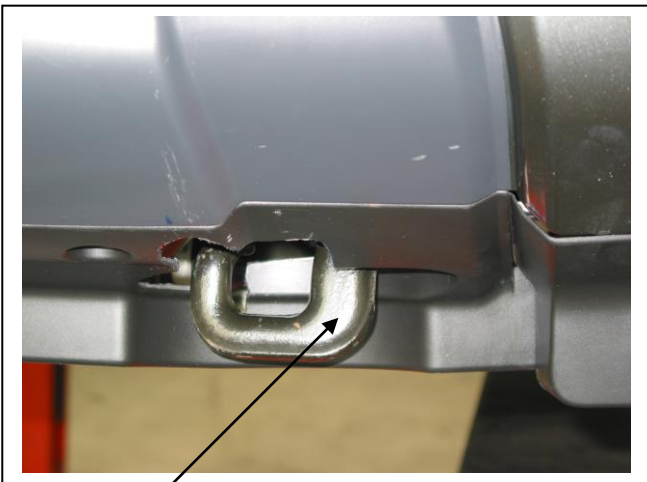


**Figure 1** - Is a bolt on the top of the chassis behind here?



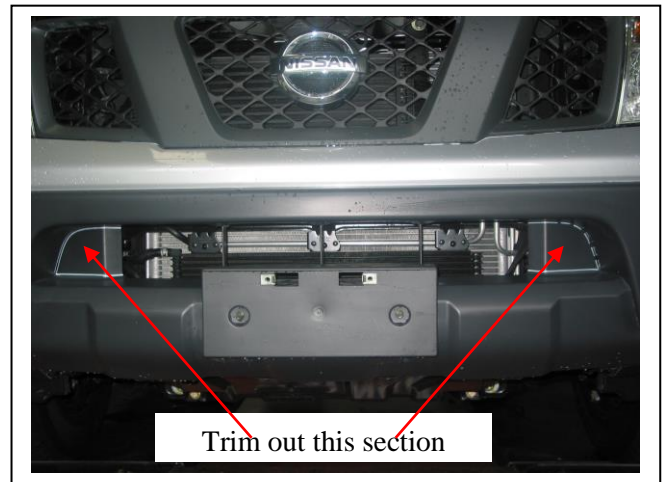
Lower plastic cover

**Figure 2**



Remove tow hook

**Figure 3**

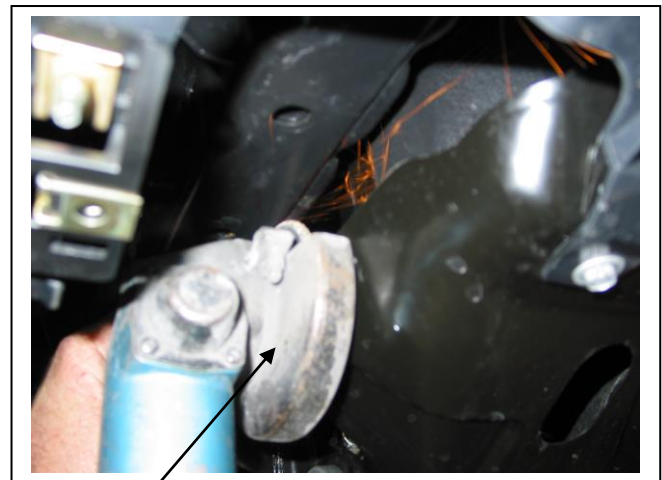


Trim out this section

**Figure 4** – Navara D40 Only – Before section is trimmed



**Figure 5** – Navara D40 Only – After section is trimmed



Air grinder

**Figure 6**





East Coast Bullbars (ECB Pty Ltd)

Tel: 07 3897 5700

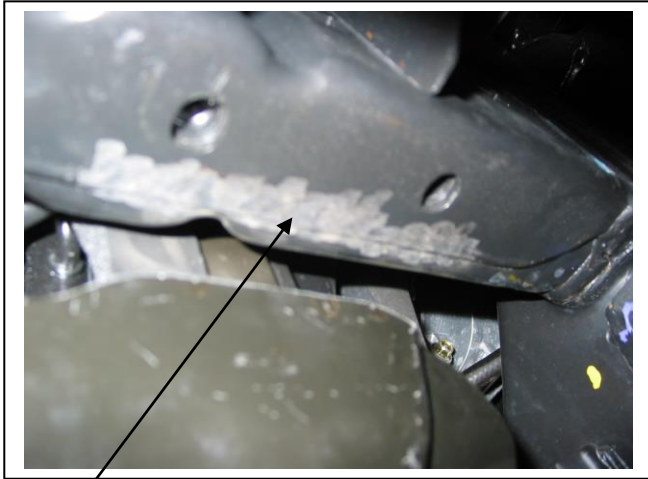
Fax: 07 3283 1168

ecb@ecb.com.au www.ecb.com.au

WORLD'S BEST  
ALLOY BULLBARS

29 Snook St  
Clontarf QLD 4019  
Australia

Po Box 122  
Margate QLD 4019  
Australia

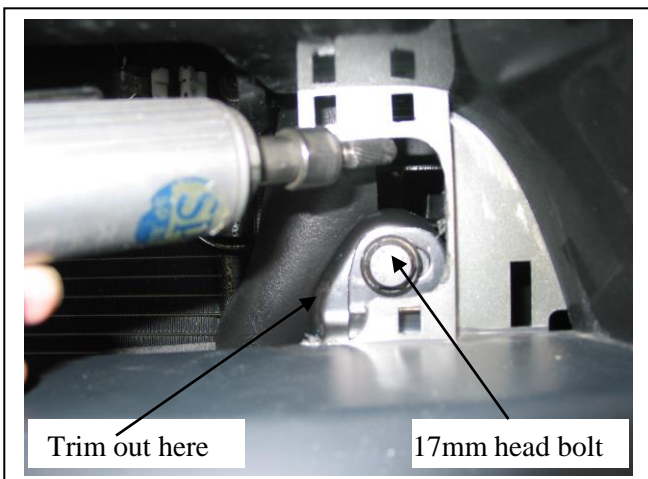


Chassis lip  
ground flush

**Figure 7**



**Figure 8 – Pathfinder R51 Model Only**



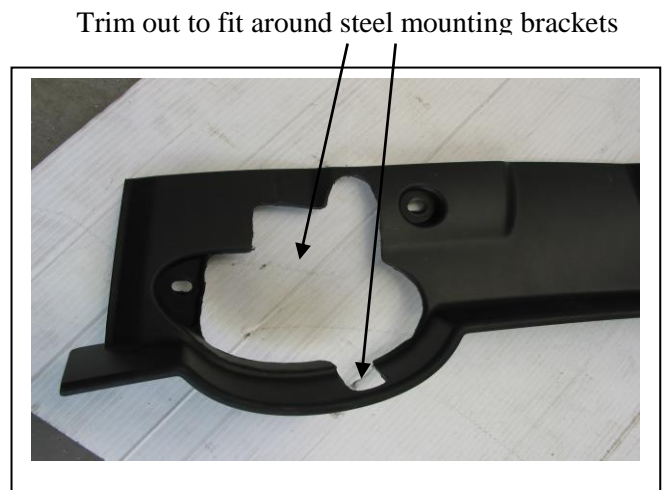
**Figure 9 – Pathfinder R51 Model only**



**Figure 10– Passenger side shown**



**Figure 11 – Trim driver's side to match original passenger side cut out**



**Figure 12**



East Coast Bullbars (ECB Pty Ltd)

Tel: 07 3897 5700

Fax: 07 3283 1168

ecb@ecb.com.au www.ecb.com.au

WORLD'S BEST  
ALLOY BULLBARS

29 Snook St  
Clontarf QLD 4019  
Australia

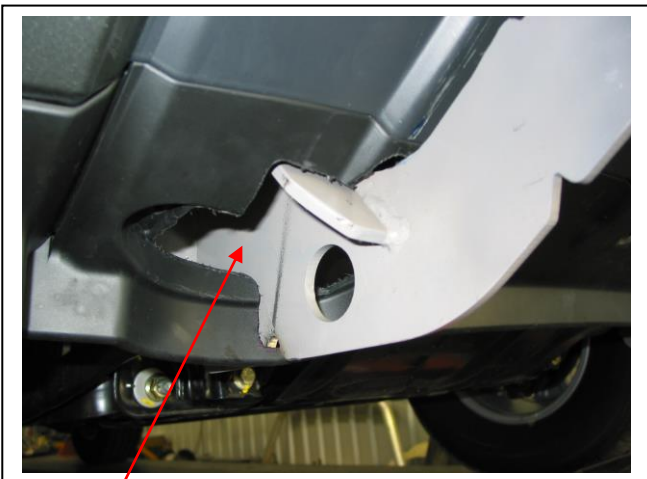
Po Box 122  
Margate QLD 4019  
Australia



Lower plastic guard **Figure 13**



**Figure 14**

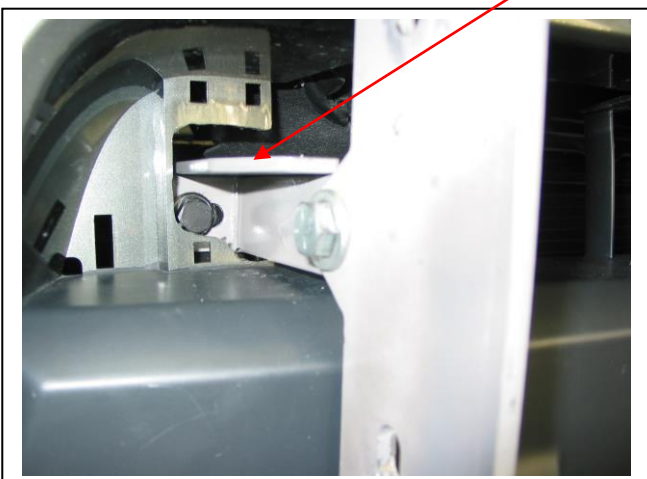


Trimmed area **Figure 15**

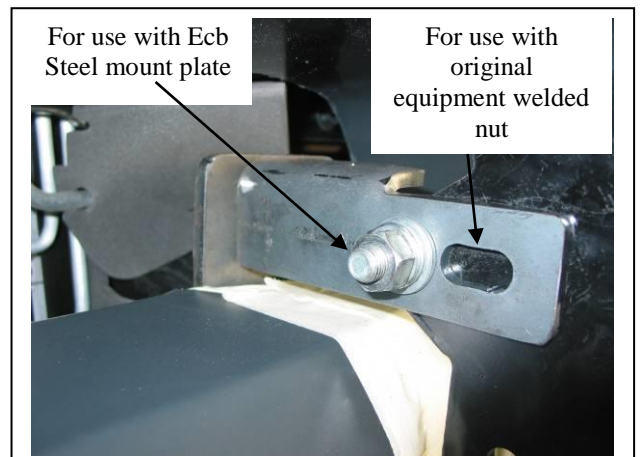


Lower plastic cover refitted **Figure 16**

Steel support



**Figure 17** – Drivers side shown



**Figure 18** – Passenger side shown fitted to extra cab vehicle





**WORLD'S BEST  
ALLOY BULLBARS**

**East Coast Bullbars (ECB Pty Ltd)**

Tel: 07 3897 5700

Fax: 07 3283 1168

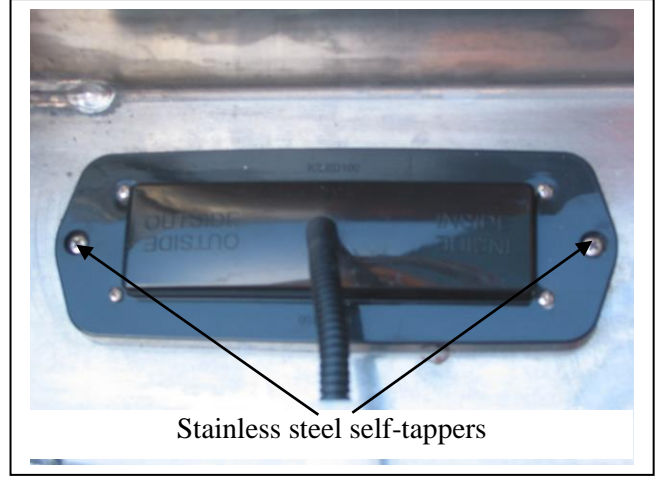
ecb@ecb.com.au www.ecb.com.au

29 Snook St  
Clontarf QLD 4019  
Australia

Po Box 122  
Margate QLD 4019  
Australia

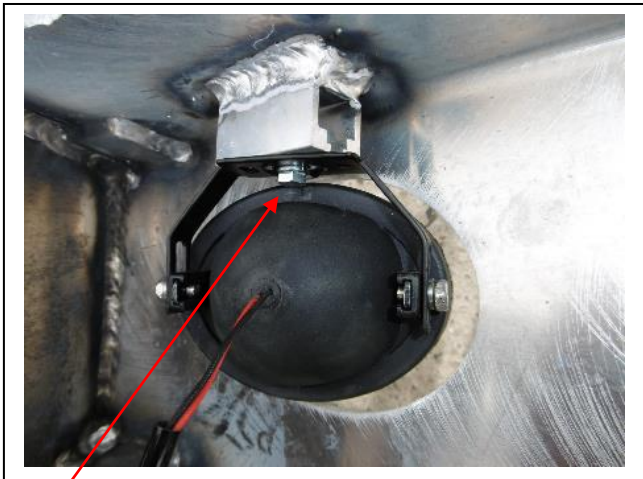


**Figure 19**



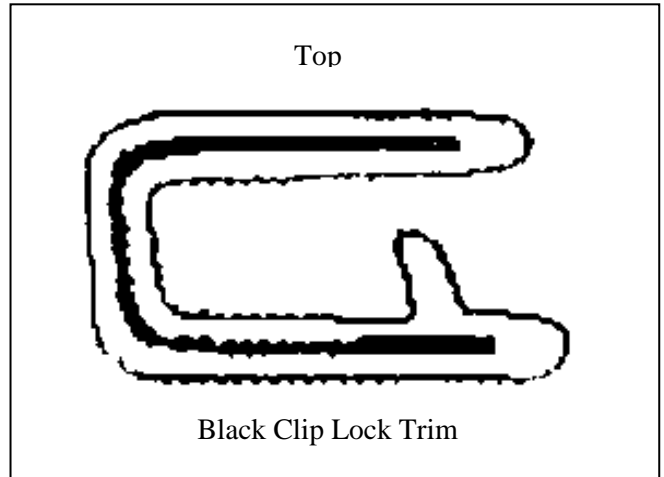
Stainless steel self-tappers

**Figure 20**



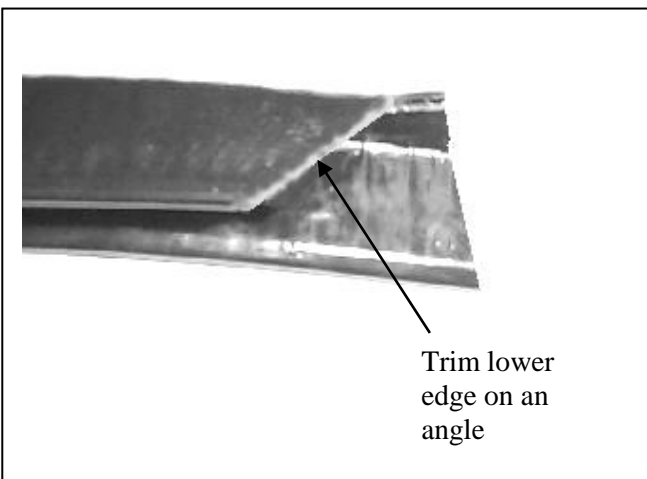
M6 bolt

**Figure 21**



Black Clip Lock Trim

**Figure 22**



Trim lower edge on an angle

**Figure 23**



**Figure 24**



East Coast Bullbars (ECB Pty Ltd)

Tel: 07 3897 5700

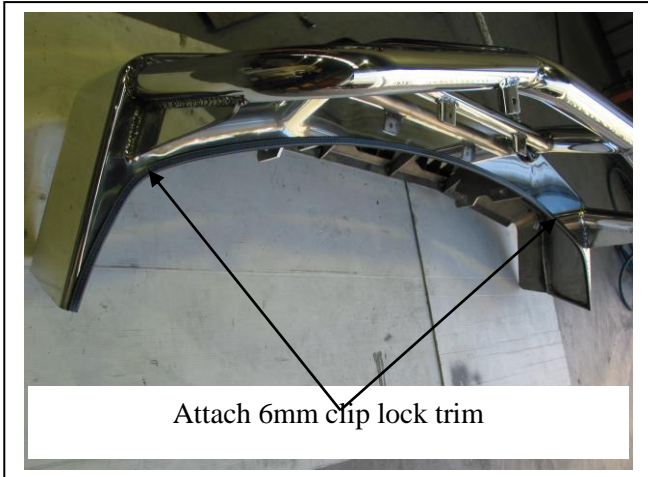
Fax: 07 3283 1168

ecb@ecb.com.au www.ecb.com.au

WORLD'S BEST  
ALLOY BULLBARS

29 Snook St  
Clontarf QLD 4019  
Australia

Po Box 122  
Margate QLD 4019  
Australia



Attach 6mm clip lock trim

Figure 25



Figure 26



**NOTE POSITION OF NUMBER PLATE**

Figure 27 front views shown



Figure 28 – Side view shown





**WORLD'S BEST  
ALLOY BULLBARS**

**East Coast Bullbars (ECB Pty Ltd)**

Tel: 07 3897 5700

Fax: 07 3283 1168

ecb@ecb.com.au www.ecb.com.au

29 Snook St  
Clontarf QLD 4019  
Australia

Po Box 122  
Margate QLD 4019  
Australia

**We value your comments**

Dear Fitter,

ECB would like to know how you went with the installation of this product. We value your comment and may need to contact you to clarify some details so please complete your contact details clearly.

We would appreciate if you could complete as many of the following details as possible.

<b>Your Name:</b>	<b>Your contact No.</b>
<b>Product Part No.</b>	<b>Product Invoice No.</b>
<b>Product Description:</b>	<b>Make, model, and year of vehicle:</b>
<b>Product Work Order No.</b>	<b>Company your from/Company product purchased from:</b>

**Date of Fitment:** \_\_\_\_/\_\_\_\_/\_\_\_\_

Was the fitting hardware supplied complete?

Yes

No

If no what was not supplied

---

---

Did the installation go well?

Yes

No

Please provide comments

---

---

Please draw diagrams if you need to.

**Post to**  
Reply Paid122  
PO Box 122  
Margate QLD 4019

**Fax to**  
(07) 3283 1168



**WORLD'S BEST  
ALLOY BULLBARS**

**East Coast Bullbars (ECB Pty Ltd)**

Tel: 07 3897 5700

Fax: 07 3283 1168

[ecb@ecb.com.au](mailto:ecb@ecb.com.au) [www.ecb.com.au](http://www.ecb.com.au)

29 Snook St  
Clontarf QLD 4019  
Australia

Po Box 122  
Margate QLD 4019  
Australia



WORLD'S BEST  
ALLOY BULLBARS

East Coast Bullbars (ECB Pty Ltd)

Tel: 07 3897 5700

Fax: 07 3283 1168

ecb@ecb.com.au www.ecb.com.au

29 Snook St  
Clontarf QLD 4019  
Australia

Po Box 122  
Margate QLD 4019  
Australia

# DESPATCH CHECKLIST BN63SY

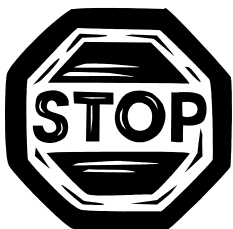
ICZBKCN63



Work Order #	
Finish:	
Transport:	
Due Date:	

- 2 – Steel Chassis mounting brackets.
- 2 – Steel chassis nut plates
- 2 – Steel top mounts
- 1 – Bolt Kit
- 1 – ECB LED Indicator / Park light kit.
- 1 – Pair ECB fog lights.
- 2 – ECB fog light surrounds
- 1 – 2200 Length 6mm clip lock
- 2 – 680 lengths 6mm clip lock
- 2 – ECB Overrides – **Fitted to Bar**
- 3 – 3mm air vents – **Fitted in Bar**

**See other side of  
this page for  
photos of all  
mounts**



Is this product “the best it can be” Yes \_\_\_\_\_ / \_\_\_\_\_  
Wrapper’s initials / Checker initials

If **NO** fix before continuing

All parts checked and completed by:

Nut and bolts: \_\_\_\_\_ Date \_\_/\_\_/\_\_

Order control: \_\_\_\_\_ Date \_\_/\_\_/\_\_

Final wrap check: \_\_\_\_\_ Date \_\_/\_\_/\_\_





East Coast Bullbars (ECB Pty Ltd)

Tel: 07 3897 5700

Fax: 07 3283 1168

ecb@ecb.com.au www.ecb.com.au

29 Snook St  
Clontarf QLD 4019  
Australia

Po Box 122  
Margate QLD 4019  
Australia

WORLD'S BEST  
ALLOY BULLBARS

